



nature
energy

Strategier för att realisera produktions- potentialen för biogas

Maj 2023



**187 mil.
m3**

2022 RNG production (expected):
187 mil. m3 from **13 plants** in
Denmark and France



+40
PIPELINE PROJECTS

40 international projects in the
pipeline.



+30%
MARKET SHARE

30% market share in Denmark.
Largest producer of biomethane in
Europe



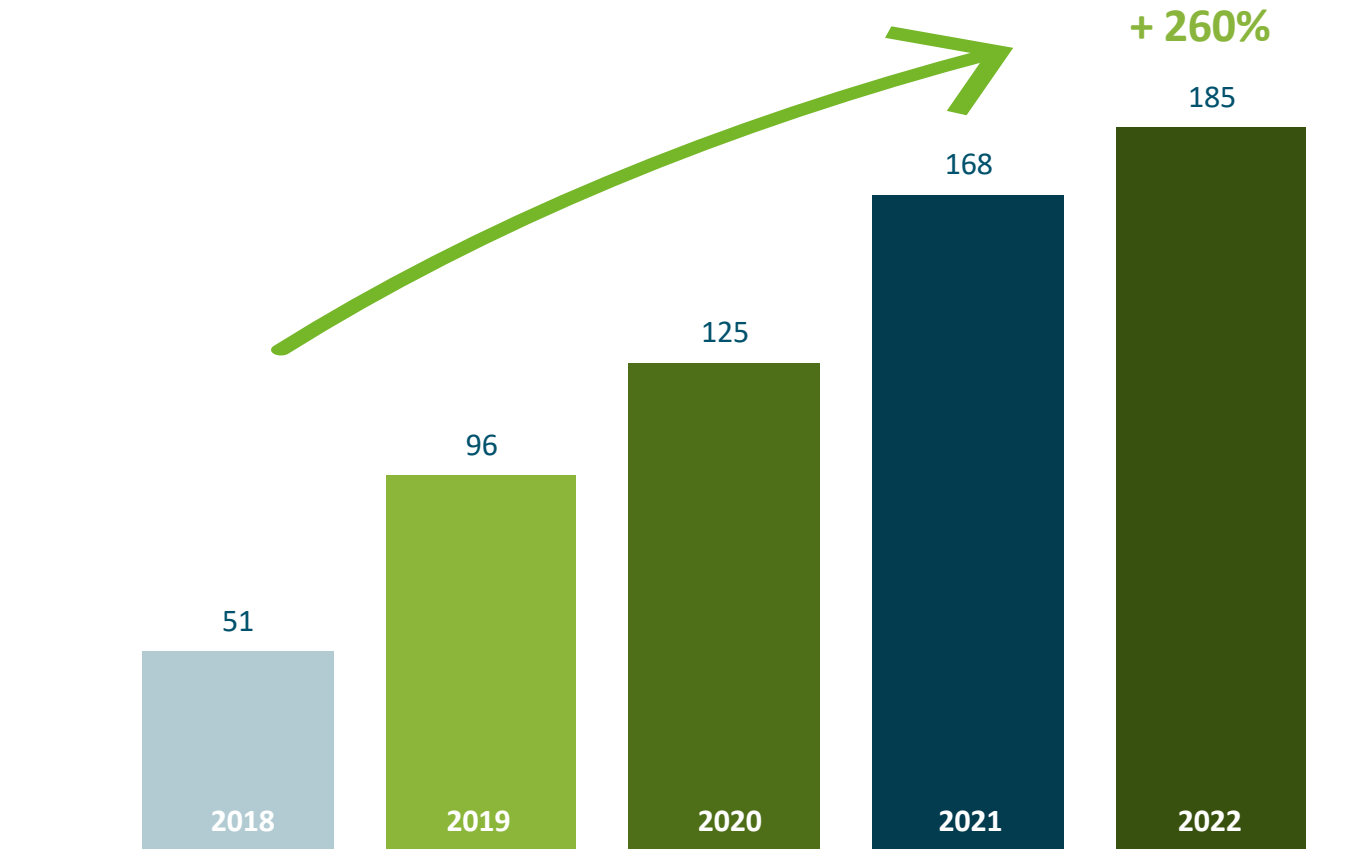
+450
EMPLOYEES

More than 450 employees

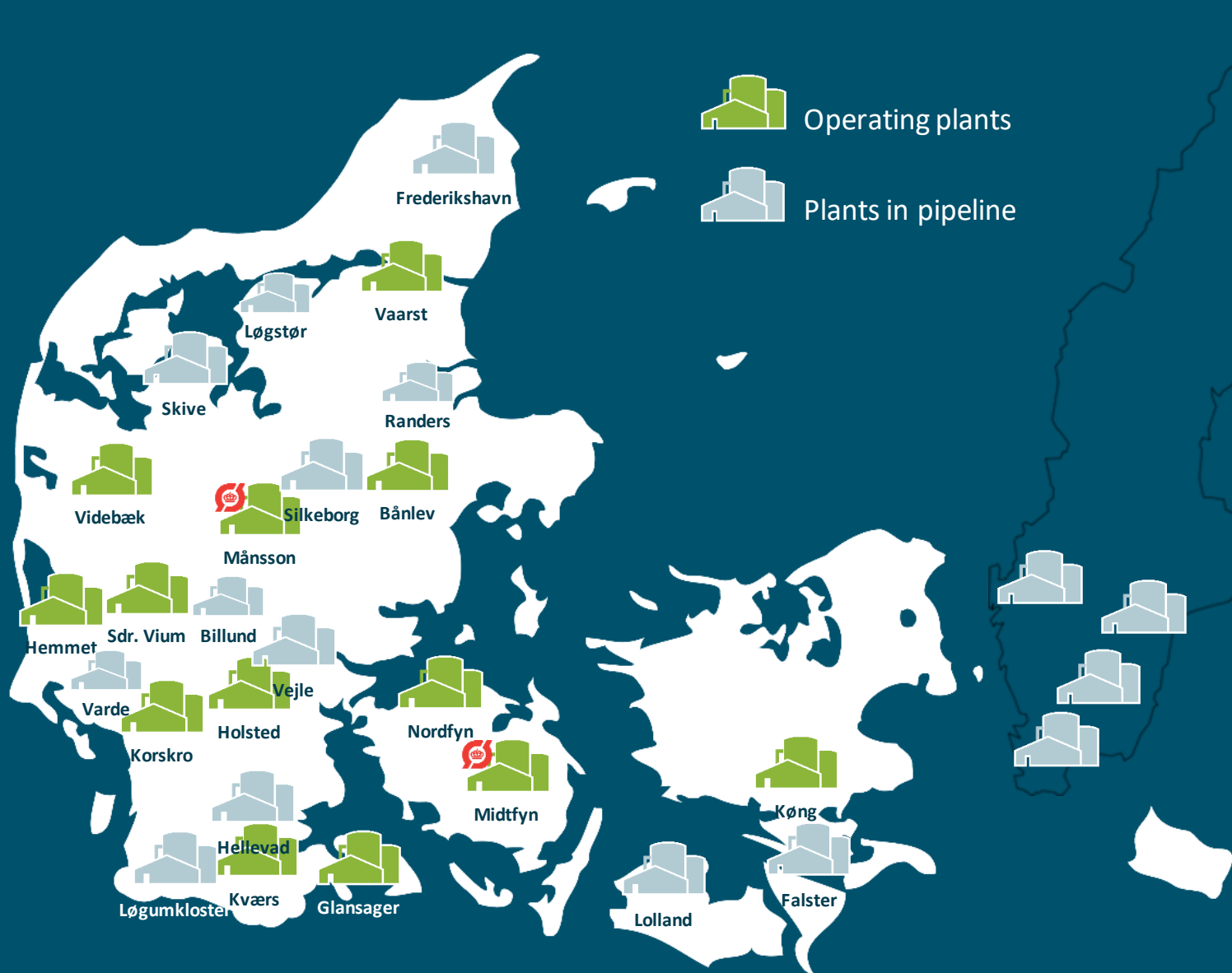


PRODUCTION OF BIOGAS (MIL. M³)

Our production
increased by **260 %**
from 2018 to 2022.



We have 10 additional plants in the pipeline in Denmark alone



And great expectations to expand in Sweden...

Market due diligence process – Key investigation points



Biomass

Biomass availability, types and price levels. Requirements for composition, treatment etc.



Agronomy

Farm types, digestate needs, stable systems, spreading regulations, storage systems, agricultural sector structure



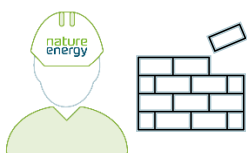
Sites

Expectations for site specifications and locations – industrial, neighbor distance



Permitting

Permitting procedure and effects on design process and timeline



BC input

Capex: Cost of construction, utility connection and land
Opex: Cost of work force, utilities and logistics



Regulations

Regulations applicable to biogas installations including risk compliance



Route to market

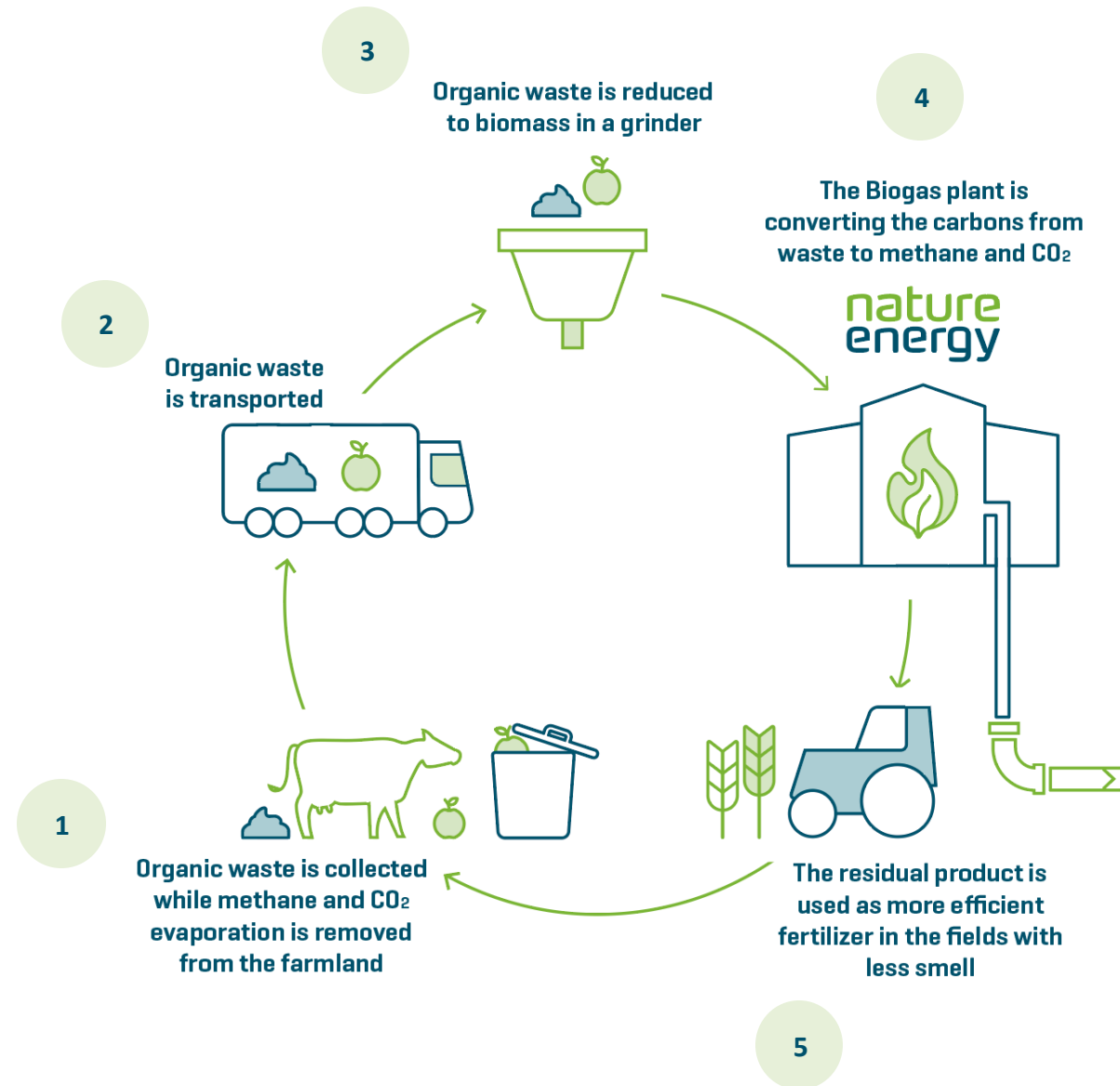
Potential routes to market and framework for certificates



Corporate affairs

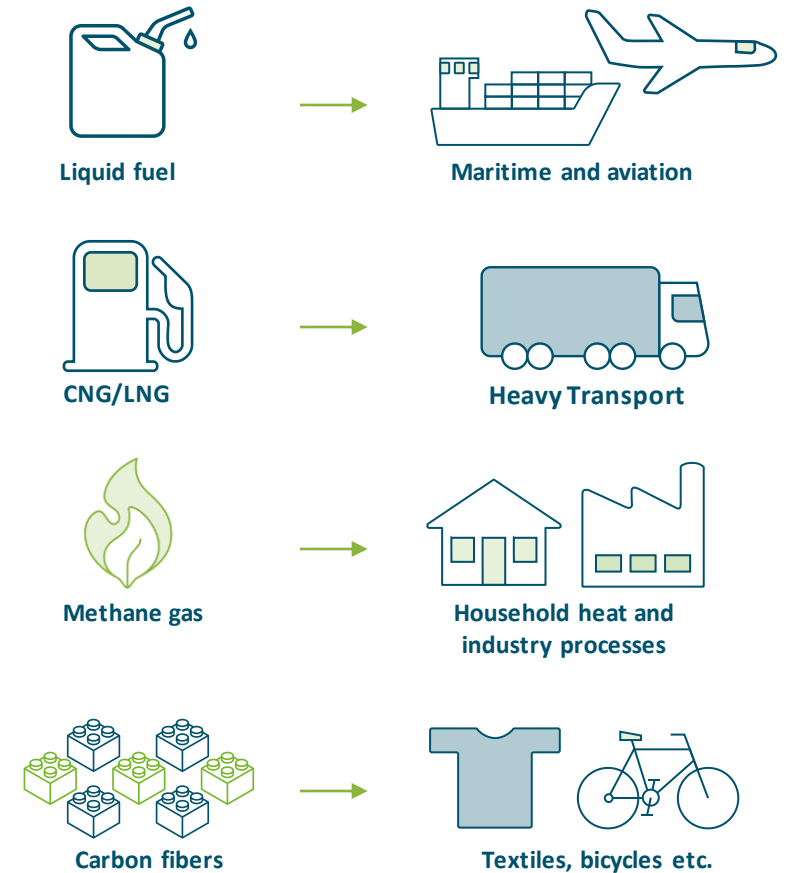
Political ambitions and support towards biogas

Our operations are based on a circular value chain



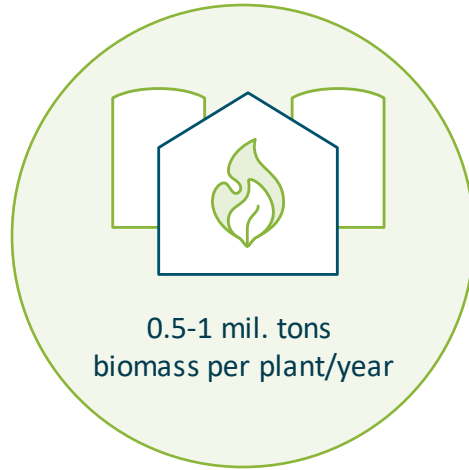
We produce RNG and biogenic CO₂ for use in various applications

- RNG is a direct substitute for methane gas and provides **household heating and thermal energy for industrial processes**
- RNG can be **liquified or compressed** and used as fuel in the heavy-duty transport sector
- **Up to 40% of RNG is biogenic CO₂**, which is necessary for production of liquid fuels, such as methanol for aviation and maritime sectors
- We generate **carbon fibers** for production of textiles, bicycles and plastic products

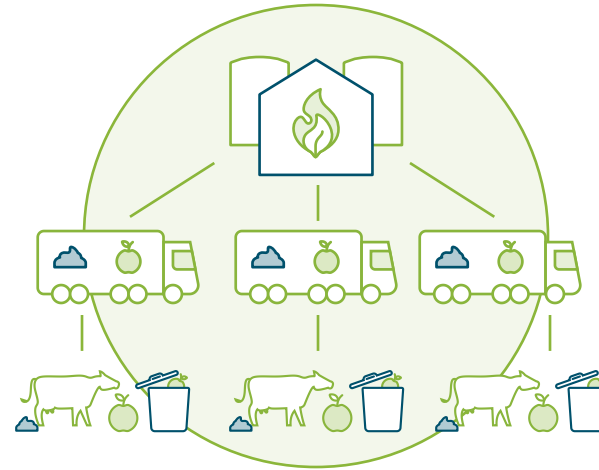


We have professionalized the biogas industry

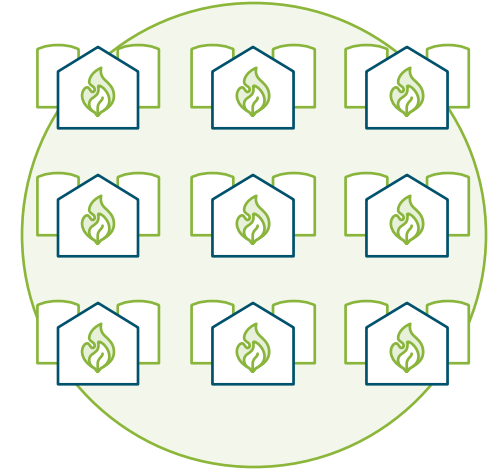
Large-scale plants



Centralized production



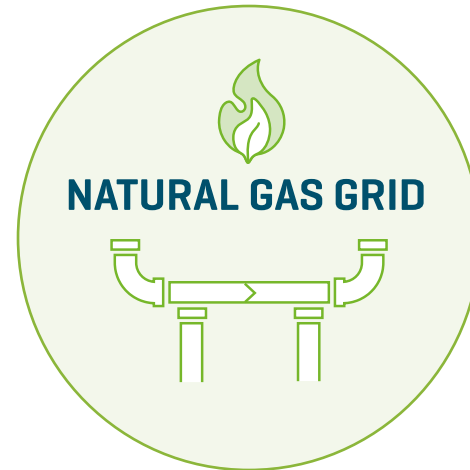
Standardized design



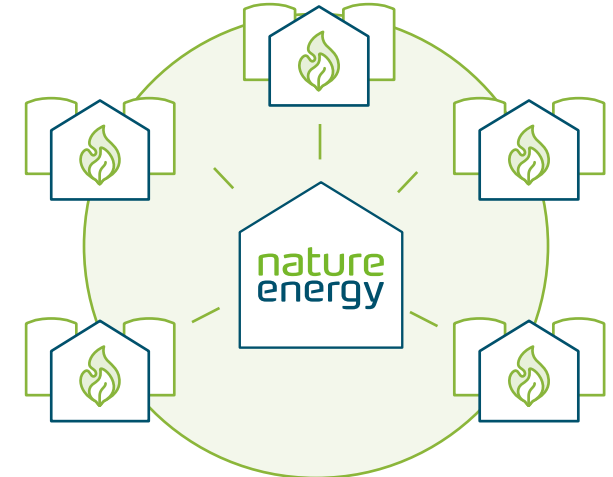
Co-digestion of various biomass



Gas-to-grid

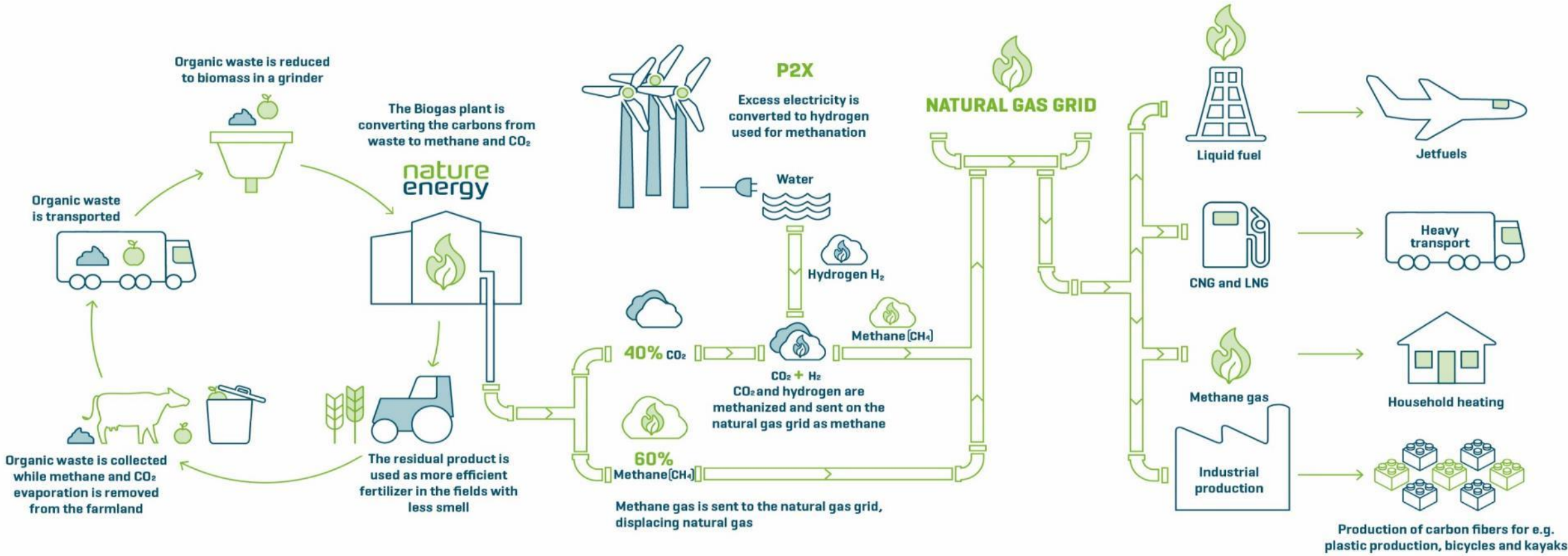


Central competence centres

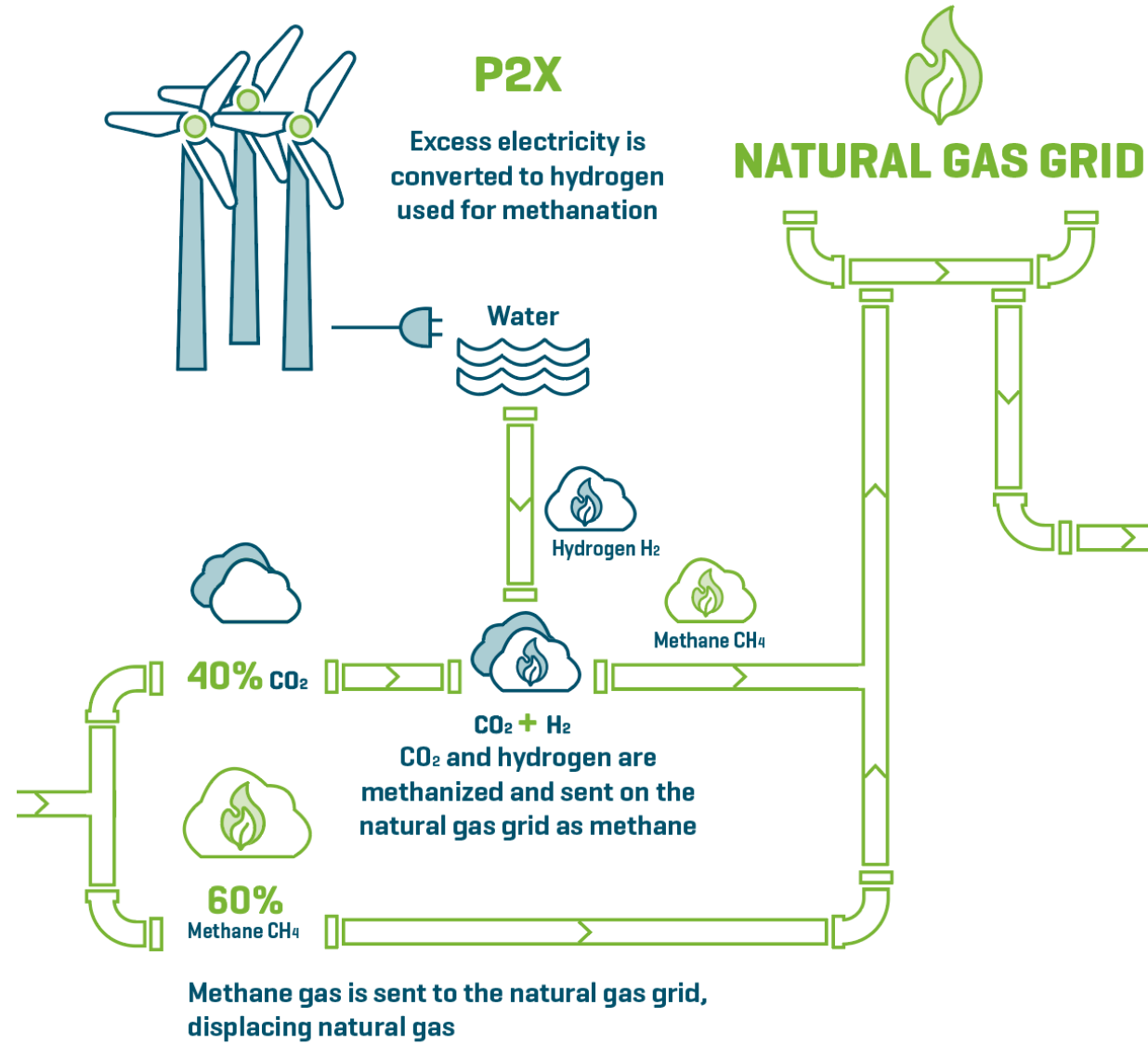


How we are pioneering a sustainable future

Our Business Model: Circular Economy at its finest



Different options for
our green CO₂





In-house R&D competencies and a laboratory at our HQ in Denmark

We collaborate with partners and universities, including e.g. Stanford University

We have a constant focus on R&D and innovation

We test different biomass types with a constant focus on improving performance

We bring ideas into innovative technologies (Power-to-X) and commercial opportunities



Winning AD concept & first-mover advantage

- Integrated **DBOO model** lets NE build high quantities of **large-scale standardized plants** at lower cost
- First-mover advantage from unparalleled **in-house EPC capabilities** with an international track record of 60+ plants constructed by Xergi
- History of developing and building every plant **on time and on budget** and winning in the most mature biomethane market



Technological edge

- **Dedicated R&D department** with attractive IP and 11 new development projects
- **Attractive patent-protected IP** portfolio enabling new feedstocks and monetization of by-products
- Well-positioned to capture value from growth of **power-to-x** industry



Operational excellence

- Successful track-record of **efficient plant operations** sets NE apart from less mature developers
- **Feedstock sourcing model** enables use of feedstocks not targeted by competitors
- Operational efficiency allows Nature Energy to be **profitable at lower prices**; resulting in plant EBITDA margin of 23-48%

nature
energy

Thank you

